

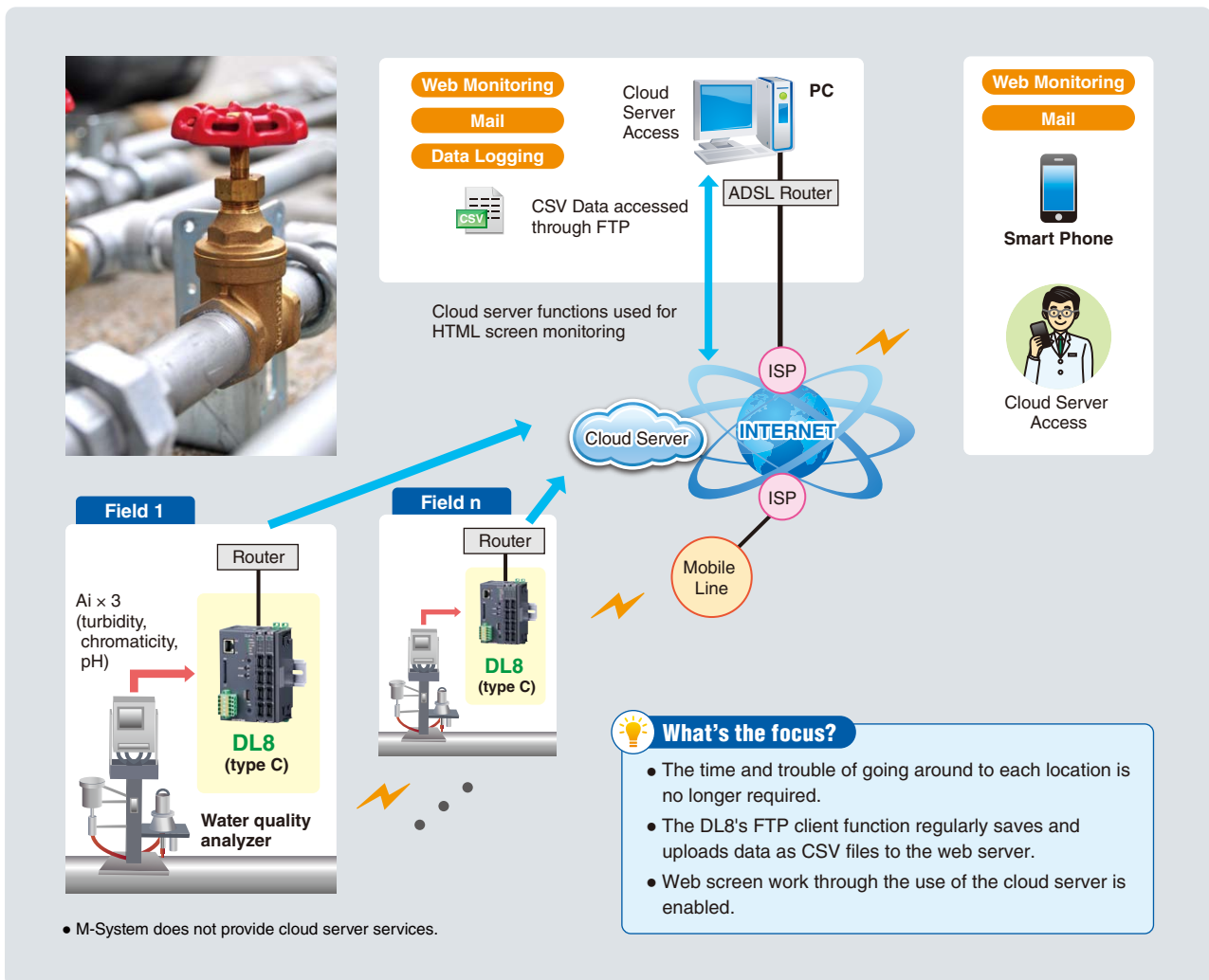


# WATER QUALITY ANALYZER

**Industry** : Water and sewerage

**Application** : Remote monitoring of water quality analyzers

- Water quality analyzers are mounted on the end of plumbing pipes for water quality management.
- With multiple monitoring targets, in the past the person responsible would go around to each location and confirm measured values.
- Web screen monitoring is accessed through the cloud server, eliminating the stress of slow screen displays caused by low-speed communication.
- Because the log data in CSV files is uploaded to the cloud server on a fixed cycle, there is no need for manual download.



• Web browsed views are images that are subject to change without notice. • In order to effect the applications on this page, static IP or dynamic DNS is required.  
 • M-System Company does not provide smart phones and/or telecommunication services.