

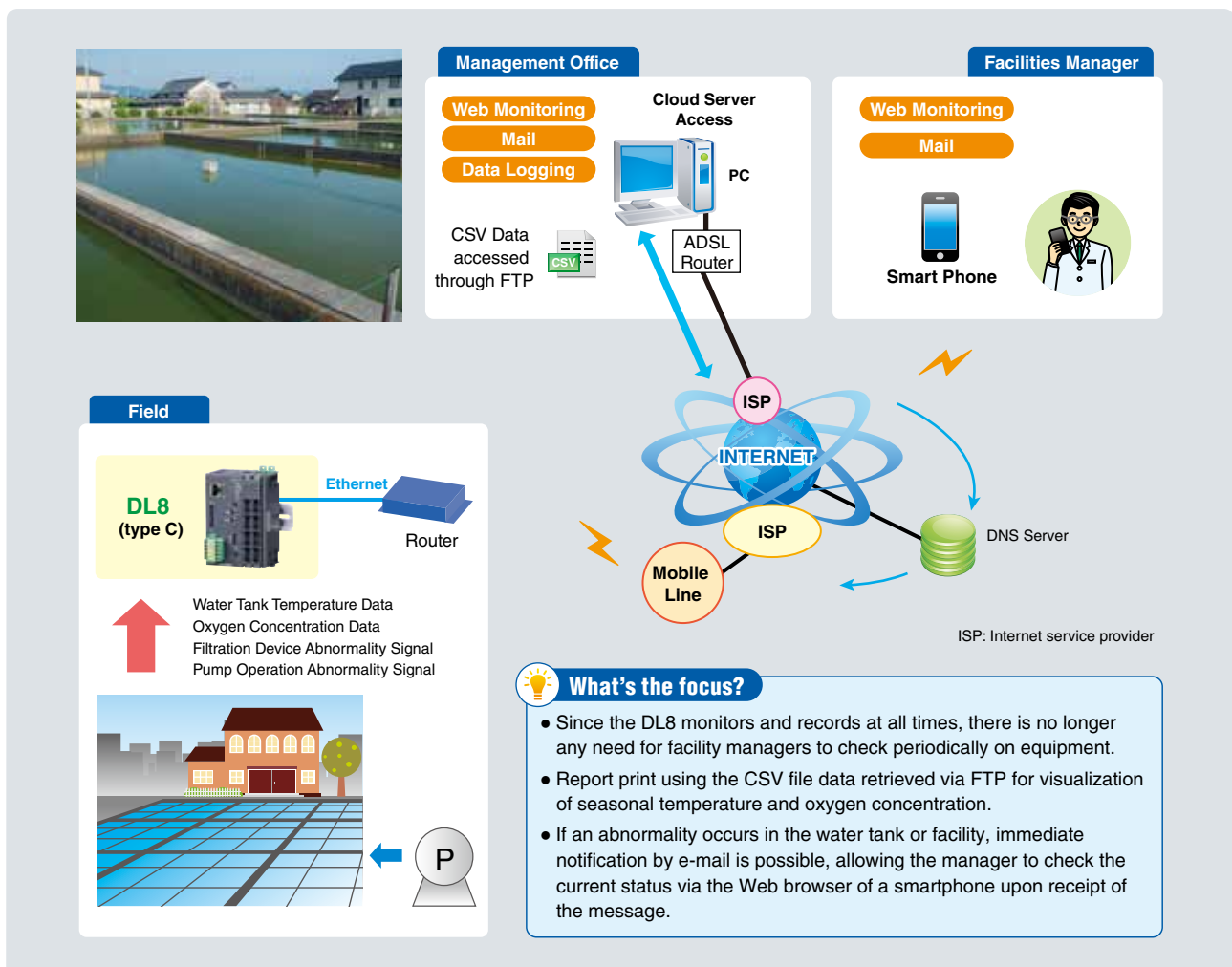


## AQUACULTURE FARMS

**Applicable Area :** Aquaculture Farms

**Application :** Remote Monitoring of Fish Farms

- At fish farms on land, the temperature and oxygen concentration are critical objects used to control the water tanks. Signals measured by temperature sensor and dissolved oxygen analyzer are provided to the DL8. Fish farms also record operating times by inputting signals from filtration devices and pump operation. These are important for water quality, and are regularly recorded to a computer at the management office or sent by email to the smartphone of the facilities manager.
- When installed in conjunction with a mobile router, the DL8 sends an e-mail over the mobile phone network to the facilities manager when an abnormality in water tank level or oxygen concentration occurs. The DL8 unit also operates as an FTP server, allowing the temperature and dissolved oxygen data stored in its SD card (CSV file) to be retrieved from the control center.



• Web browsed views are images that are subject to change without notice. • In order to effect the applications on this page, static IP or dynamic DNS is required.  
 • M-System Company does not provide smart phones and/or telecommunication services.