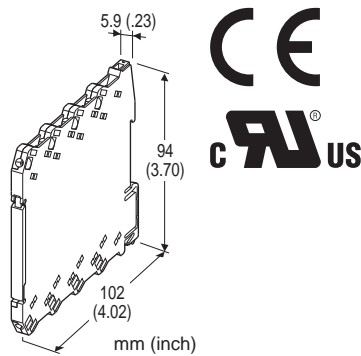


## Euro Terminal Ultra-Slim Signal Conditioners M6D Series

### INPUT LOOP POWERED ISOLATOR

#### Functions & Features

- 5.9-mm wide ultra-slim design
- Low profile allows the M6D module mounted in a 120-mm deep panel
- Loop-powered design eliminates output loop power supply
- Two isolators housed in one enclosure
- High-density mounting
- UL approval



## MODEL: M6DSN-[1]DD[2]

### ORDERING INFORMATION

- Code number: M6DSN-[1]DD[2]
- Specify a code from below for each [1] and [2]. (e.g. M6DSN-2DD/UL)

### [1] NO. OF CHANNELS

- 1: 1 channel
- 2: 2 channels

### INPUT

#### Current

D: 0 - 20 mA DC (4 - 20 mA DC)

### OUTPUT

#### Current

D: 0 - 20 mA DC (4 - 20 mA DC)

### [2] OPTIONS

#### STANDARDS & APPROVALS

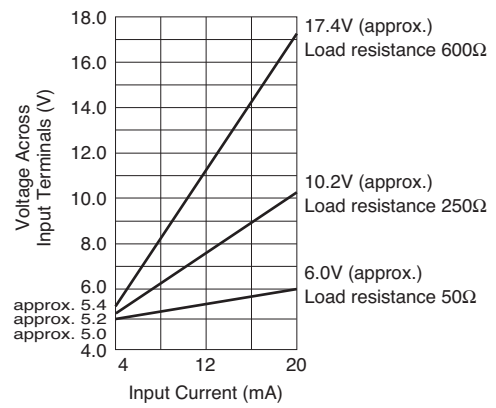
- blank: CE marking
- /UL: UL approval (CE marking)

### GENERAL SPECIFICATIONS

- Connection:** Euro terminal (torque 0.3 N·m)
- Applicable wire size:** 0.2 to 2.5 mm<sup>2</sup>
- Housing material:** Flame-resistant resin (black)
- Isolation:** Input to output, between channels
- Span adjustments:** ±0.5 % (front)

### INPUT & OUTPUT

- Equivalent input impedance:** 250 Ω plus load resistance with 20 mA input
- Operational range:** 0.05 - 40 mA DC (Accuracy is assured within 0.05 - 22 mA)
- Minimum operating current:** 0.05 mA
- Load resistance:** 0 - 600 Ω



### INSTALLATION

- Operating temperature:** -20 to +55°C (-4 to +131°F)
- Operating humidity:** 30 to 90 %RH (non-condensing)
- Mounting:** Installation Base (model: M6DBS) or DIN rail
- Weight:** 60 g (2.1 oz)

### PERFORMANCE in percentage of span

- Accuracy:** ±0.1 %
- Temp. coefficient:** ±0.015 %/°C (±0.008 %/°F)
- Response time:** Approx. 20 msec. (0 - 90 %)
- Load effect:** (factory-calibrated with 250 Ω load) 0.004%/Ω (0 - 600 Ω)
- Insulation resistance:** ≥ 100 MΩ with 500 V DC
- Dielectric strength:**
  - 1500 V AC @1 minute (input to output)
  - 2000 V AC @1 minute (between channels)
  - 2000 V AC @1 minute (input or output to ground)

### STANDARDS & APPROVALS

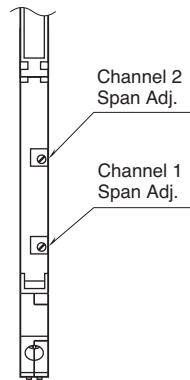
- CE conformity:**
  - EMC Directive (2004/108/EC)
  - EN 61000-6-4 (EMI)
  - EN 61000-6-2 (EMS)

**Approval:**

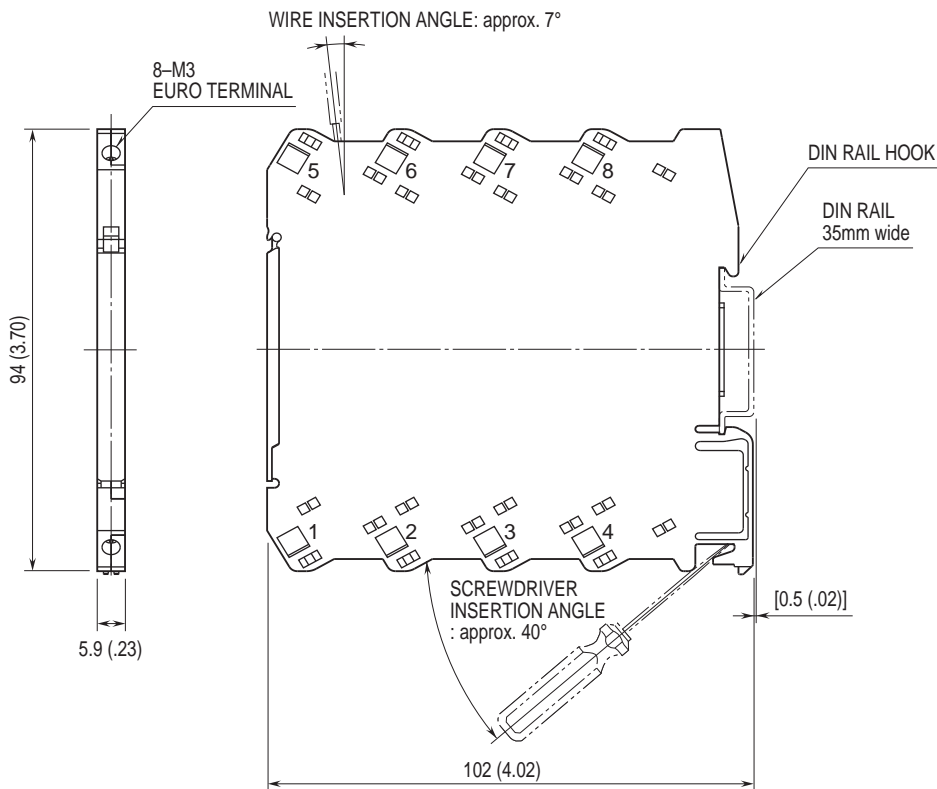
UL/C-UL nonincendive Class I, Division 2,  
 Groups A, B, C, and D hazardous locations  
 (ANSI/ISA-12.12.01, CAN/CSA-C22.2 No.213)  
 UL/C-UL general safety requirements  
 (UL 61010-1, CAN/CSA-C22.2 No.61010-1)

**EXTERNAL VIEW**

(With the cover open)

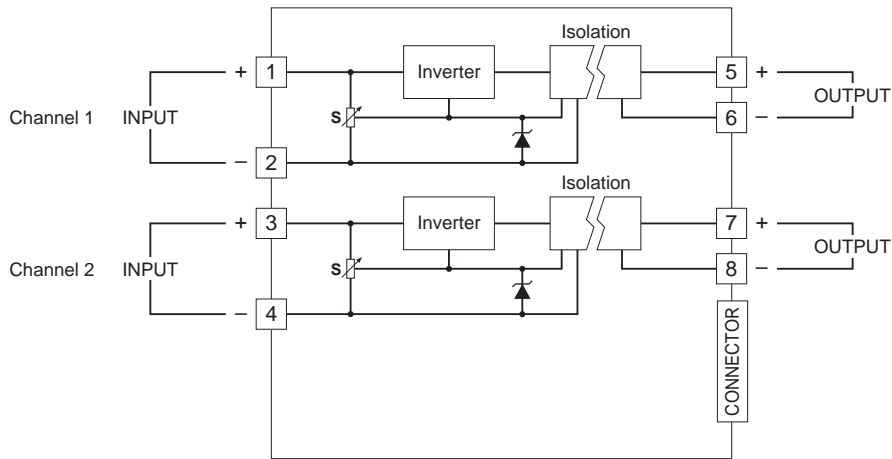


**DIMENSIONS unit: mm (inch)**



• When mounting, no extra space is needed between units.

**SCHEMATIC CIRCUITRY & CONNECTION DIAGRAM**



Specifications are subject to change without notice.